

# S5 AC Switch - disconnecter base mounting 2P - 3P - 3P+N

Size 1

A 250|315|400



series  
S5

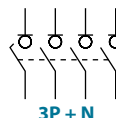
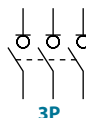


CODE-250A

CODE-315A

CODE-400A

2P	S5-02502PRO	S5-03152PRO	S5-04002PC0
3P	S5-02503PRO	S5-03153PRO	S5-04003PC0
3P + N	S5-02503NR0	S5-03153NR0	S5-04003NC0



## Technical information

According to IEC 60947-3



tests:

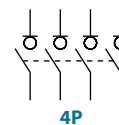


				250	315	400
Rated thermal current in ambient at	Ith	40 °C	A	250	315	400
		50 °C	A	250	315	400
		60 °C	A	250	315	320
Rated insulation voltage	Ui	V	1000	1000	1000	
Rated impulse withstand voltage	Uimp	kV	8	8	8	
AC rated operational current <sup>*(1)</sup> (Rated operational frequency 50/60 Hz)	Ie	Ue 400V AC21A	A	250	315	400
		Ue 400V AC22A	A	250	315	400
		Ue 400V AC23A	A	250	315	400
Rated breaking capacity	400V AC23	A	2000	2520	3200	
Rated making capacity	400V AC23	A	2500	3150	4000	

<sup>\*(1)</sup> Other voltages and / or utilization categories. Please consult

<sup>\*(2)</sup> Without limiting protective device (short-circuit maintained 50... 100 ms.)

				250	315	400
<b>Short - circuit behaviour</b>						
Rated short-circuit making capacity <sup>*(2)</sup>	Icm	kA (peak)		20	20	20
Rated short-time withstand current (1sec.)	Icw	kA rms		12	12	12
<b>Mechanical features</b>						
Number of mechanical operations (according to the standards, for other values please consult)	Cycles			8000	8000	5000
Maximum weight 3P		Kg		1,7	1,7	1,9
Maximum weight 3P + N		Kg		1,9	1,9	2,1



Also available 4P switch - disconnectors under request, please consult



Accessories



» Direct handle

CODE DS-SI11



» External handle included shaft <sup>\*(e1)</sup>

IP65  
CODE DS-SA11



» External handle without shaft

IP65  
CODE DS-SA14

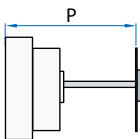


» Emergency external handle included shaft <sup>\*(e1)</sup>

IP65  
CODE DS-SR11



» Shafts



Standard shaft included <sup>\*(e1)</sup>

L (mm)	P (mm)
227	103... 256

Shaft extensions

Type 1		
L (mm)	P (mm)	CODE
375	103... 415	DS-EP14

Type 2		
L (mm)	P (mm)	CODE
536	103... 576	DS-EP15



» Terminal protection

CODE DS-CU12  
☞☞ (1 unit for input or output)



» Terminal shrouds

CODE DS-CU11  
☞☞ (1 kit for input or output)



» Auxiliary contacts

1NO+1NC CODE D5LAU01  
2NO+2NC CODE D5LAU02

I<sub>e</sub> = 16 A (resistive loads)  
4 A (inductive loads) at 250 Vac.



» Safety key lock device

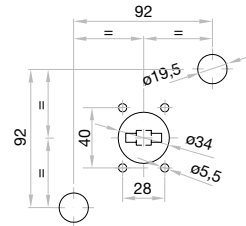
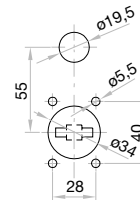
Simple CODE DS-CA11  
Double CODE DS-CE11

For external handle, lock the handle by means of a key in position "OFF" (under request, in "ON"), the key can only be removed with the handle locked

Door drilling for handle and key lock device

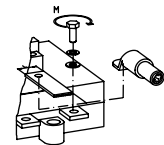
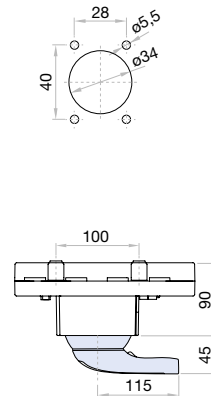
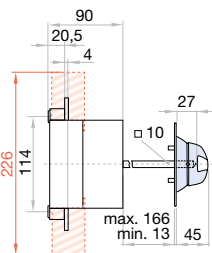
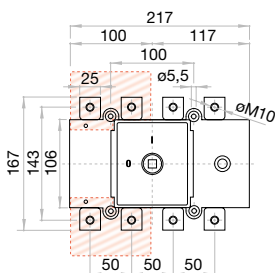
Simple

Double

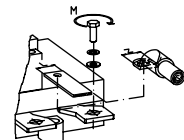
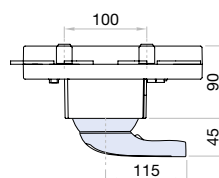
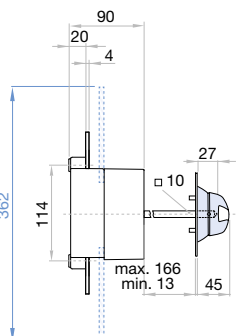
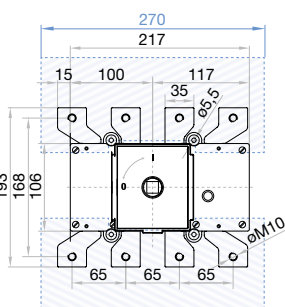


Dimensions (mm)

Door drilling for external handle



S max (Cu) mm <sup>2</sup>	H max (Cu) mm	L max (Cu) mm	M	
			T	Nxm
250A 315A	185	7	25	M10 18



S max (Cu) mm <sup>2</sup>	Z max	H max (Cu) mm	L max (Cu) mm	M	
				T	Nxm
400A	240	44	7	40	M10 24